

- 1** Create Business account
- 2** Create plant
- 3** Add a Data Logger
- 4** How to create End user account via business account

Overseas Technical Support Dep.  
13 May 2024

## App Download

- Please scan the QR code and download the APP.



### **SOLARMAN Smart APP:**

This app is remote monitoring and controlling platform for the end-users. The installer can help the end-user to create a account of SOLARMAN Smart in SOLARMAN Business.



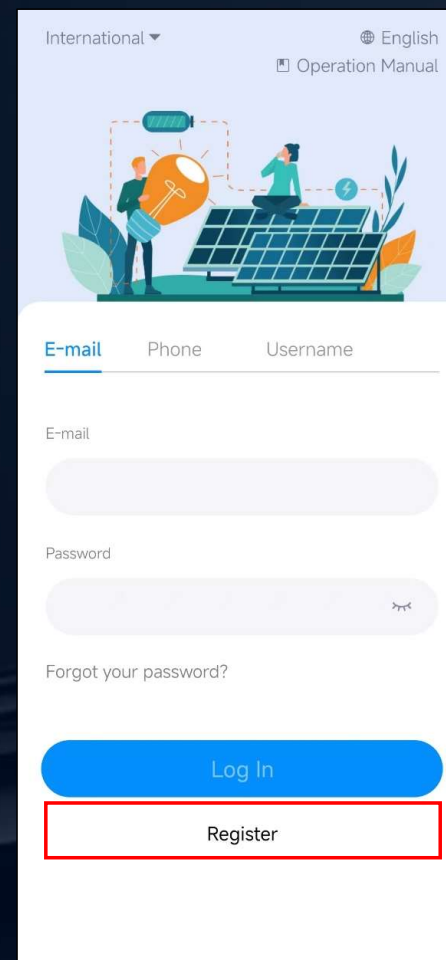
### **SOLARMAN Business APP:**

This app is remote monitoring and controlling platform for the distributors, dealers and installers.


# Account Register

## ■ Step 1: Start register

- Click “Register” to start account.



International ▾ English  
Operation Manual



**E-mail** Phone Username

E-mail

Password

Forgot your password?

Log In

Register

# Account Register

## ■ Step : Start register

- You can use E-mail or Phone Number to register a new account, but using E-mail is recommended.
- Region Choose: there are two region “Mainland China” and “International”, click here and choose “International” and the continent where you are, and then click “Confirm”;
- “E-mail”: Input your own e-mail address.
- “Verification Code”: After fill out your email and click “Send”, then you will receive the “Verification Code ” in your e-mail inbox, if you cannot find the verification e-mail in inbox, please check spam or trash box of your e-mail. And then input the verification code you received.
- Mark a check on “I have read and agreed T&Cs Privacy Policy”;
- Click “Next”.

←

### Register

Enter E-mail or Phone Number

International

E-mail

Verification Code Send

I have read and agreed [T&Cs Privacy Policy](#)

Next

Switch to phone registration

← Choose Region

① Please select the region corresponding to your business scope. The system will register you in the chosen region based on your selection.

Mainland China

International ✓

Other Asian countries/regions

Europe

Oceania

Africa

North America

South America

Antarctica

[Not sure how to choose?](#)

Confirm

# Account Register

## ■ Step 2: Input account information

- “Name”: Input your name, you can input your own name or your company name as you want.
- “Username”: it is not mandatory, it is a optional;
- “Password”: Set the password follow the request.
- Click “Next”.

←

Register

Enter Account Info

\*Name

Username

\*Password

A combination of letters and numbers with more than 8 characters

Next

# Account Register

- **Step 3: Input business information**
  - Click “Business Type”,
  - Select the business type based on real situation.

←

Register  
Enter Business Info

Business Type Enterprise >

\*Business Name Enter Business Name >

Business Area China >

Type Installation O&M Provider >

Next

← Select Business Type

Enterprise ✓

Individual

# Account Register

## ■ Step 3: Input business information

- Click “Business Name”,
- Edit your business name, the App supports 14 languages, you can edit your business name in your own language;
- Click “Save”.

←

**Register**  
Enter Business Info

---

Business Type Enterprise >

**\*Business Name** Enter Business Name >

Business Area China >

Type Installation O&M Provider >

Next

Cancel Edit Business Name Save

---

Business Name(English)  
Please enter business name

---

Business Name(简体中文)  
Please enter business name

---

Business Name(Português)  
Please enter business name

---

Business Name(Español)  
Please enter business name

---

Business Name(Nederlands)  
Please enter business name

---

Business Name(Polski)  
Please enter business name

---

Business Name(Français)  
Please enter business name

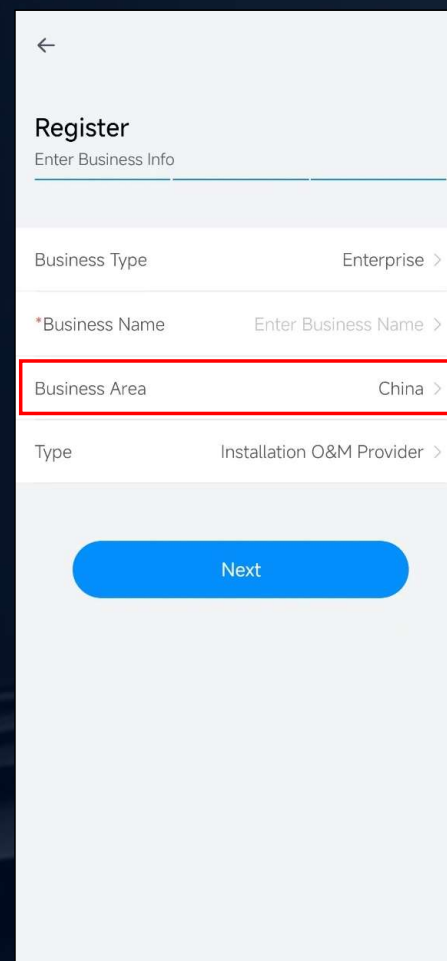
---

Business Name(한국어)

# Account Register

## ■ Step 3: Input business information

- Click “Business Area”;
- Select your business area as real situation.



←

### Register

Enter Business Info

---

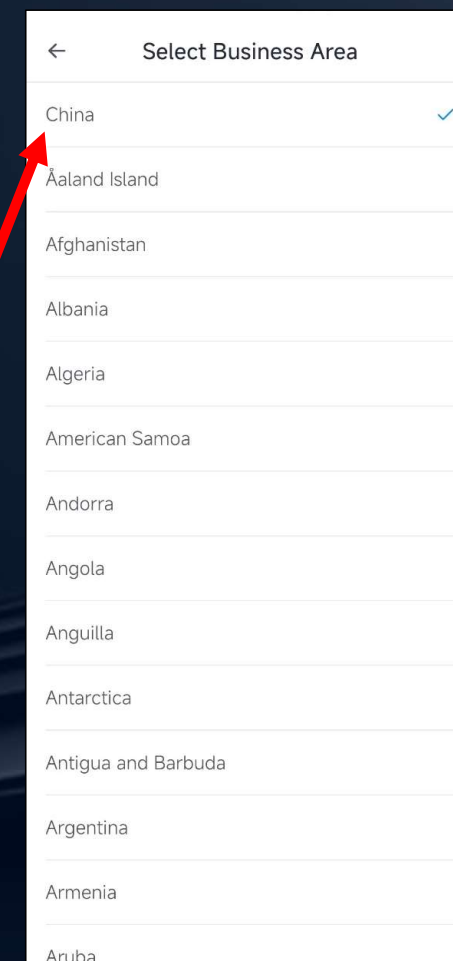
Business Type Enterprise >

\*Business Name Enter Business Name >

**Business Area China >**

Type Installation O&M Provider >

Next



← Select Business Area

China ✓

Åaland Island

Afghanistan

Albania

Algeria

American Samoa

Andorra

Angola

Anguilla

Antarctica

Antigua and Barbuda

Argentina

Armenia

Aruba



# Account Register

## ■ Step 3: Input business information

- Click “Type”;
- Select the type based on real situation;
- Click “Next”;
- It will show that you register successfully.

←

**Register**  
Enter Business Info

---

Business Type Enterprise >

\*Business Name Enter Business Name >

Business Area China >

Type Installation O&M Provider >

Next

← Select Type

Installation O&M Provider ✓

Investors

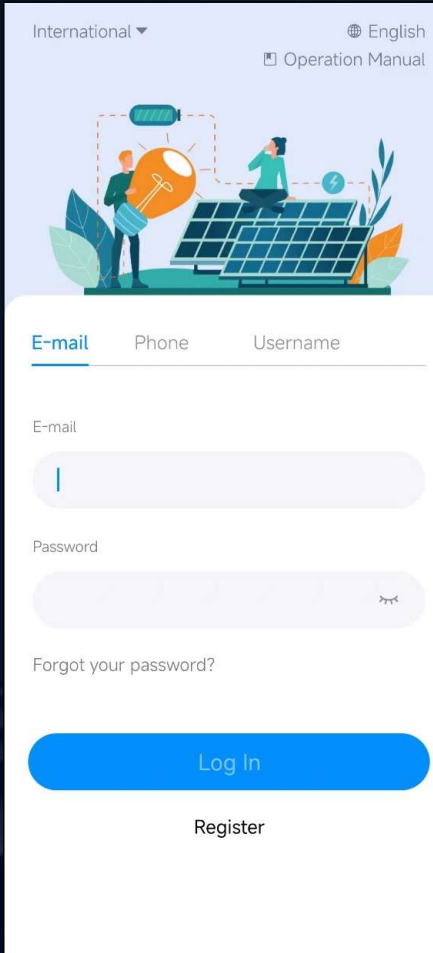
Distributor

Manufacturer

# App Login

## ■ After successful account registration, you can login.

- You can login in three different ways, by E-mail is recommended;
- Input your email and password, and then click “Log In”.
- After login, you will enter the interface shown as left picture.



International ▾ English  
Operation Manual

International ▾ English  
Operation Manual

E-mail Phone Username

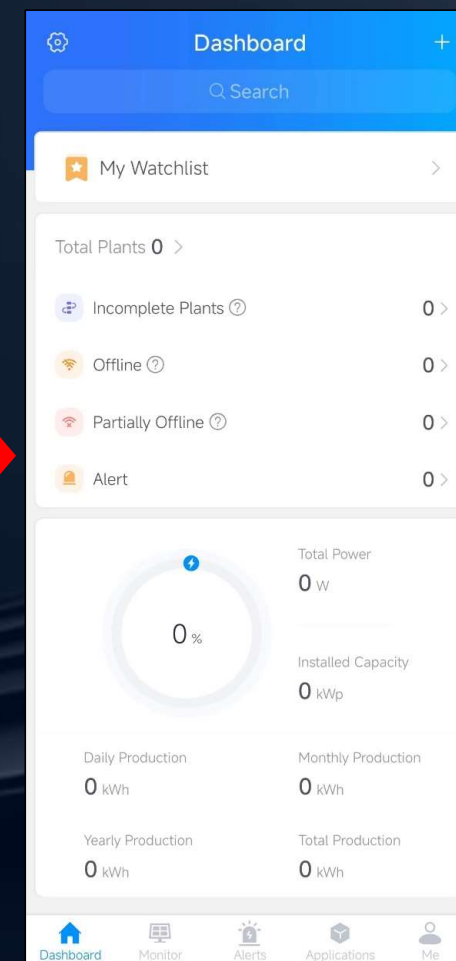
E-mail

Password

Forgot your password?

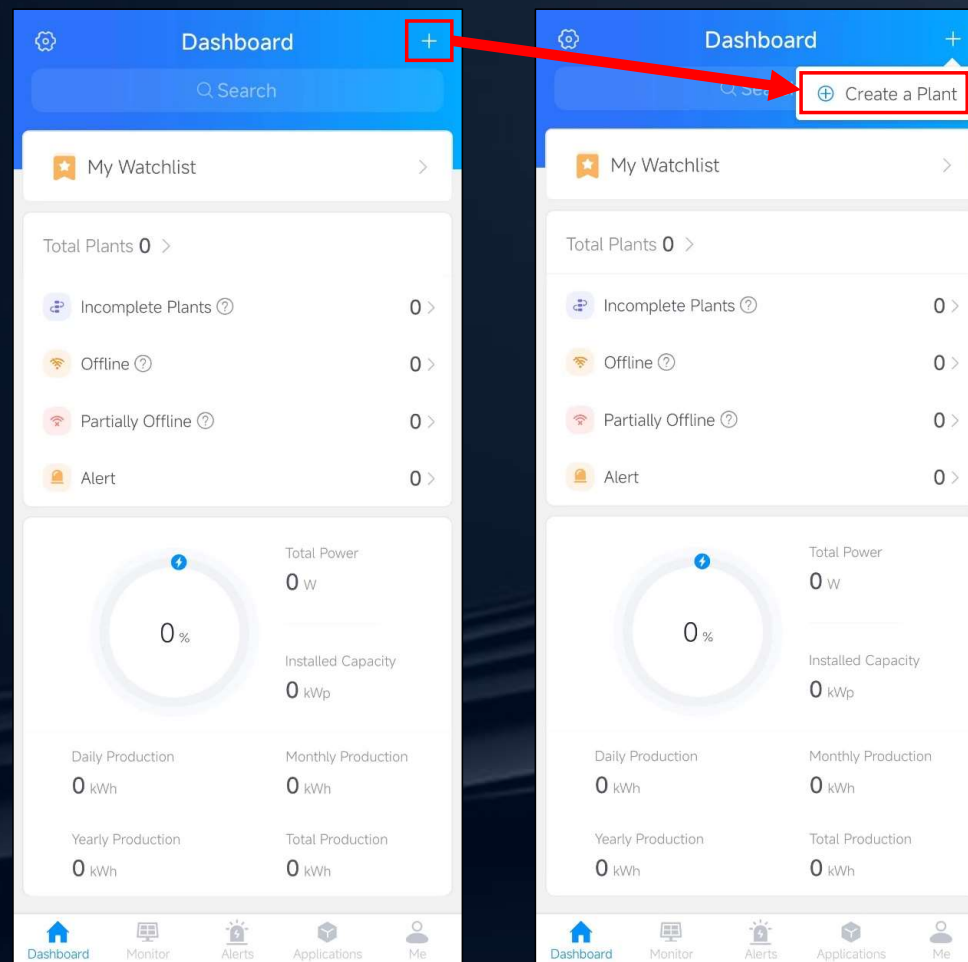
Log In

Register



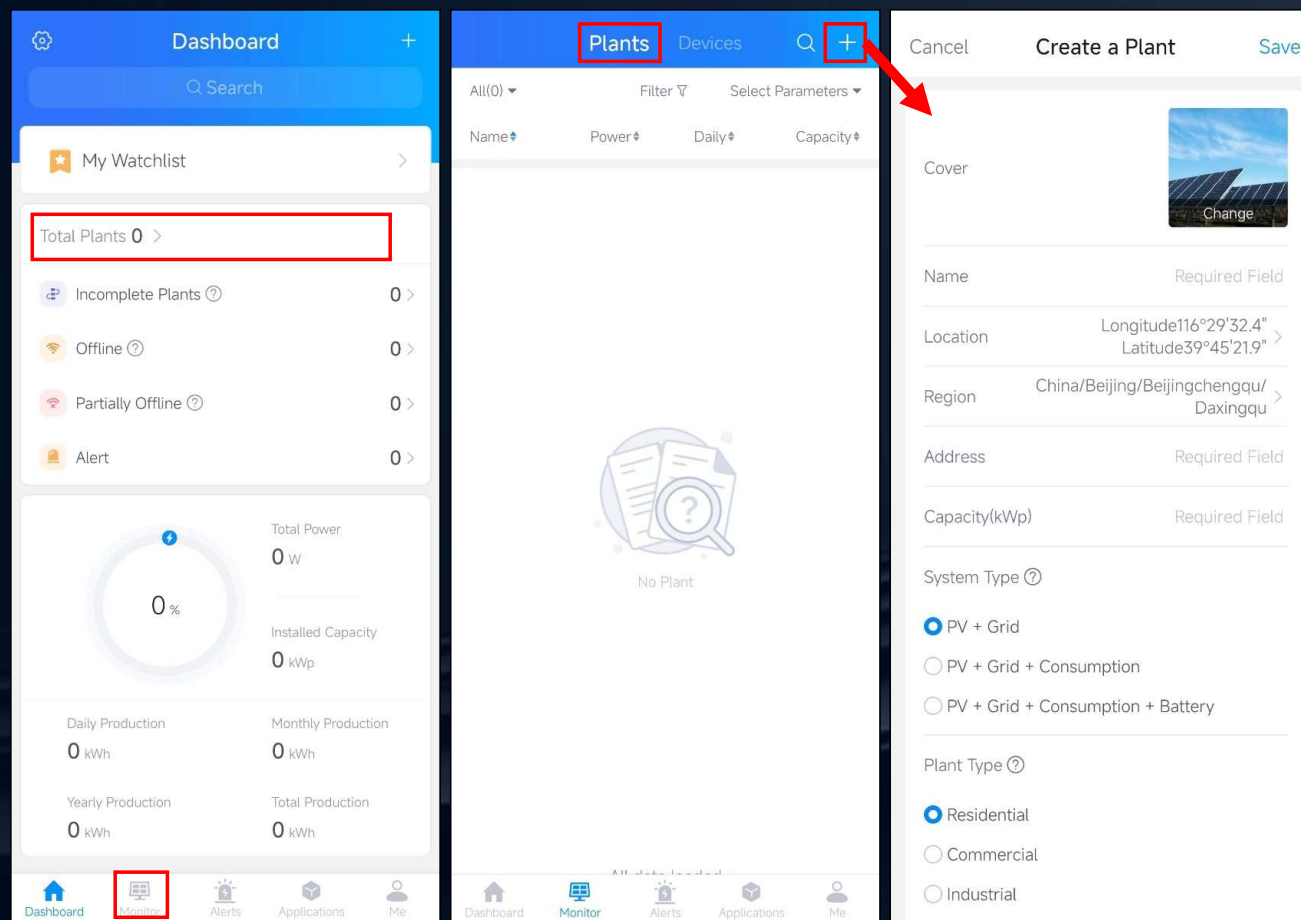
## Add Power Plant

- After login, you can add your power plant in the app, you can create a power plant via two different ways. Method one:
  - Click the “+” at the top right corner of Dashboard, choose “Create a Plant”.



# Add Power Plant

- After login, you can add your power plant in the app, you can create a power plant through two ways:
  - Click the “Total Plants” or “Monitor” icon go to the plants list;
  - Choose “Plants” and click the “+” at the top right of screen go to “Create a Plant” page.



## Add Power Plant

■ At “Create a Plant” page, you should input the information required as real situation.

- “Name”: Name your plant as you want.
- “Location”: Will be set automatically when you get GPS permission to this App.
- “Region”: Will be set automatically when you get GPS permission to this App.
- “Address”: Input detailed address of the power plant.
- “Capacity”: It means the total power capacity of PV system connected with inverter.
- “System Type”: always choose “PV + Grid + Consumption + Battery”.
- “Plant Type”: always choose “Residential”.
- Other items are not mandatory, click “Save”.

Cancel Create a Plant Save

Cover  Change

Name Required Field

Location Longitude116°29'32.4" >  
Latitude39°45'21.9" >

Region China/Beijing/Beijingchengqu/ Daxingqu >

Address Required Field

Capacity(kWp) Required Field

System Type ⓘ

PV + Grid

PV + Grid + Consumption

PV + Grid + Consumption + Battery

Plant Type ⓘ

Residential

Commercial

Industrial

Cancel Create a Plant Save

Plant Type ⓘ

Residential

Commercial

Industrial

Ground Mounted

Azimuth(°) ⓘ Optional, 0-360°

Tilt Angle(°) ⓘ Optional, 0-90°

On-grid Date ⓘ 2024-05-02 >

Time Zone (UTC+08:00) >  
Beijing,Chongqing,Hong Ko...

Currency CNY >

Unit Price(CNY/kWh) Optional

Total Cost(CNY) Optional

Contact Person Optional

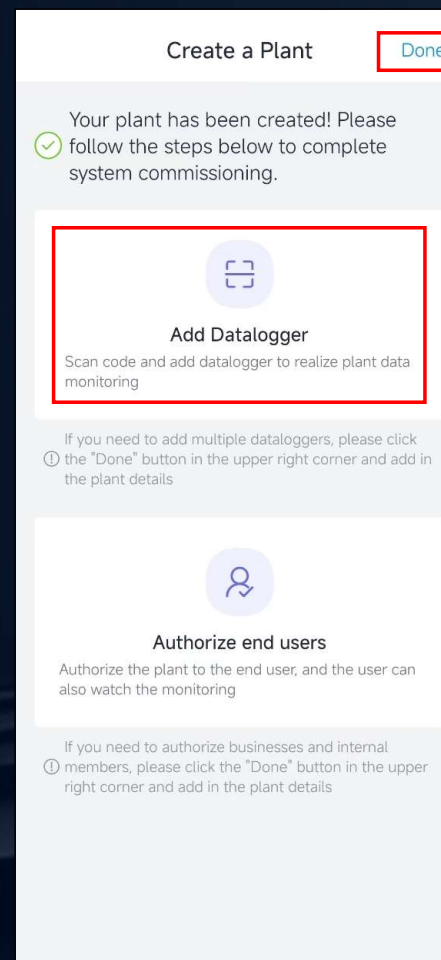
Contact Number Optional, used to make calls in the APP

Business Name Optional

## Add a Logger

### ■ After Finish “adding power plant”

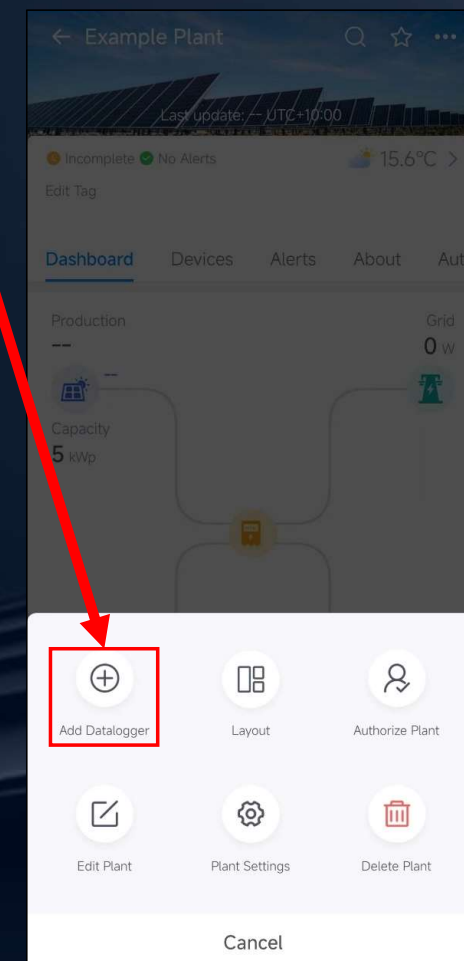
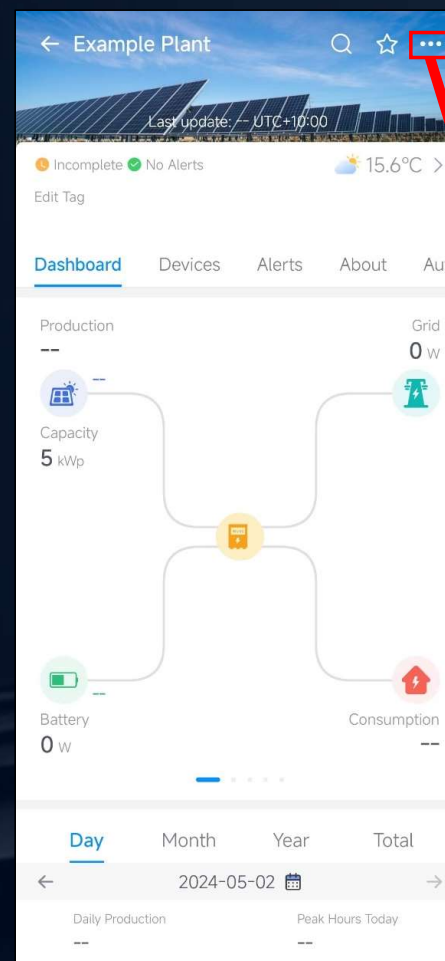
- After create power plant successfully, you will go to this page which shows that your plants has been created successfully.
- Click “Done”, you will go back to plant page;
- Click “Add Datalogger”, you will start to add logger to this plant.



# Add a Logger

## ■ Finish add power plant

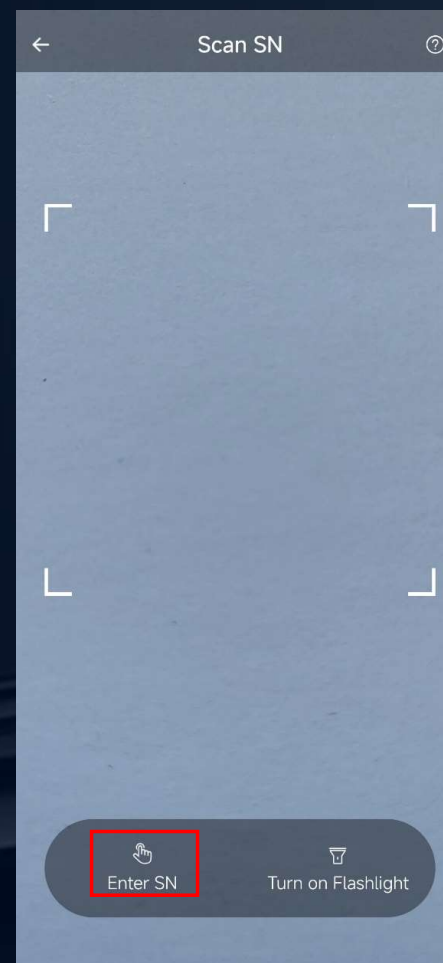
- You can also add logger to the plant at plant page;
- Click “...” at the top right of screen, and then click “Add Datalogger”.



## Add a Logger

### ■ Add a Logger

- After click “Add Datalogger”, will go to this page, you can input the SN of Wi-Fi dongle or scan the QR code on Wi-Fi dongle.
- After scan the QR code or input SN successfully, click “Add”, and then it will go to next page.

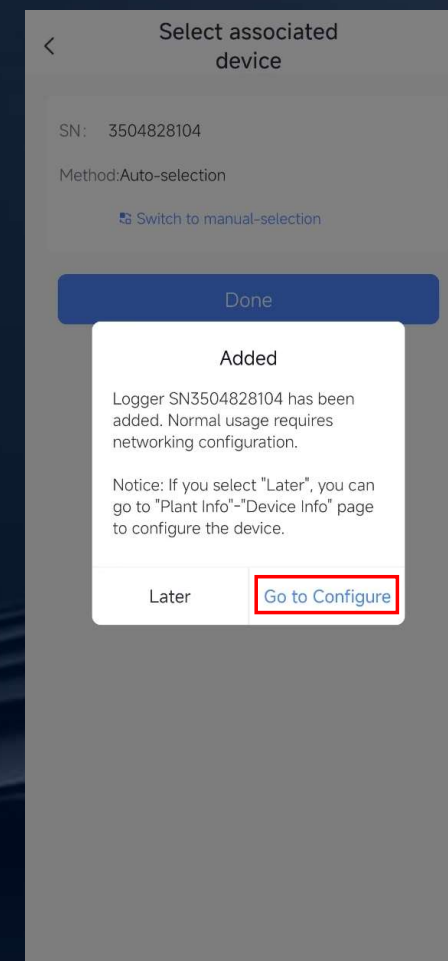
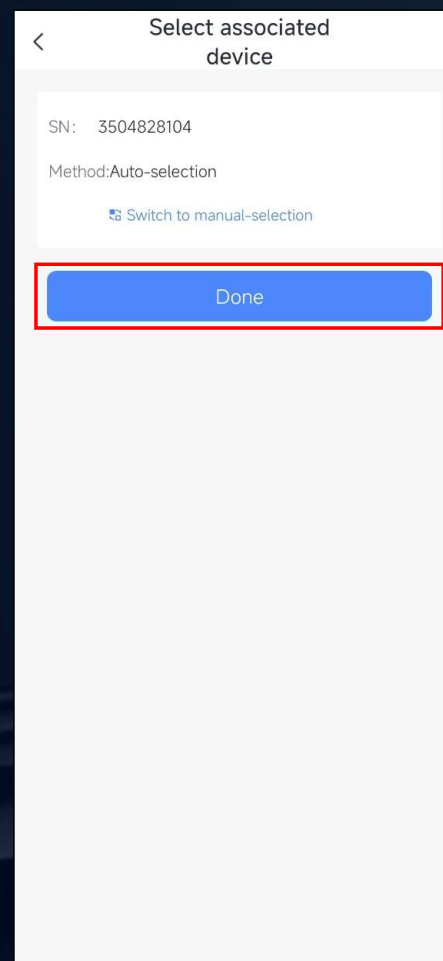




## Add a Logger

### ■ Configure Wi-Fi

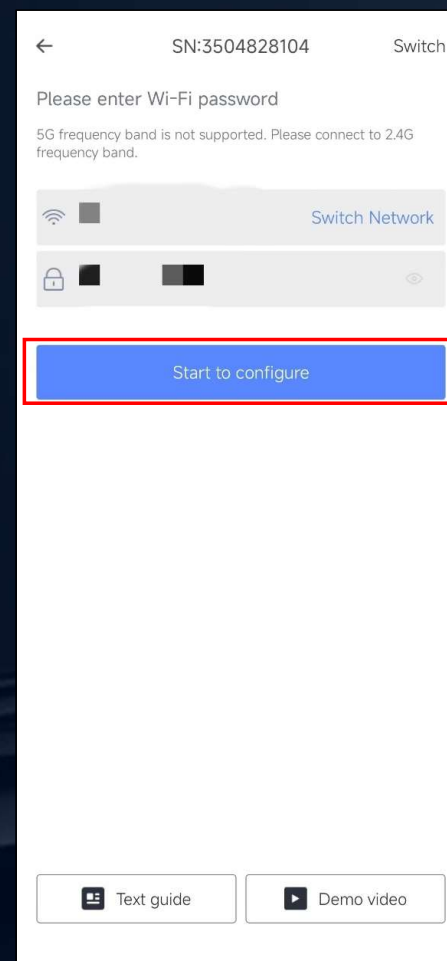
- Click “Done”;
- Click “Go to Configure”, it will go to next page to configure the internet.
- When you do this step, please make sure your phone has connected to the Wi-Fi which you want the Wi-Fi dongle connect to, and make sure the signal of Wi-Fi is good.



# Add a Logger

## ■ Configure Wi-Fi

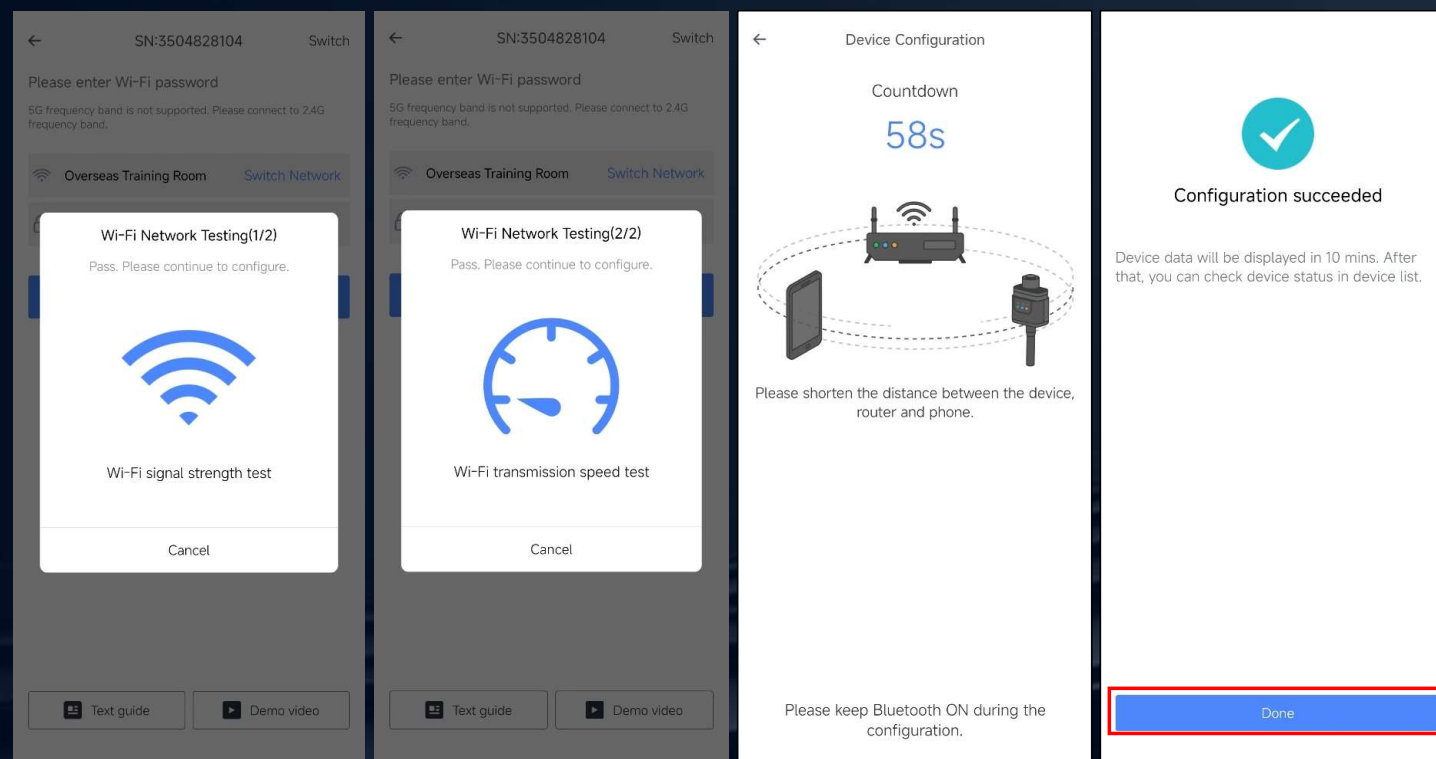
- Choose the Wi-Fi name you want the Wi-Fi dongle connect to, and make sure that your phone also has connected to this Wi-Fi at this time;
- Click “Start to configure”, it will configure the internet automatically as following steps.



# Add a Logger

## ■ Configure Wi-Fi


- The internet will be configured as following steps;
- After successfully, click “Done”.



# Add a Logger

## ■ Configure Wi-Fi

- If devices does not configure successfully, then follow the steps shown on the right;
- Check the connection between Wi-Fi dongle and WIFI interface on the PCS, the Wi-Fi signal;
- Click “Return to modify”, repeat the steps previous page.




**Configuration failed**


Please follow the steps below for troubleshooting.




1. Turn on WLAN
2. Please make sure the Bluetooth is ON.
3. Wi-Fi network is normal
4. Wireless router does not implement the white-black list
5. Shorten the distance between your phone and device
6. Connect to other Wi-Fi and try again
7. Try to remove special characters such as (, . ; "=""") in the Wi-Fi network name.

Return to modify

Try AP mode

 Text guide

 Demo video

Light	Implication	Instruction
	Communicate with base station	1. Light off: Connection to the router failed. 2. On 1s/Off 1s (Slow flash) : Connection to the router succeeded. 3. Light on: Connection to the server succeeded. 4. On 100ms/Off 100ms (Fast flash) : Fast networking.
	Communicate with inverter	1. Light on: Logger connected to the inverter. 2. Light off: Connection to the inverter failed. 3. On 1s/Off 1s (Slow flash) : Logger communicating with inverter.
	Logger Running Status	1. Light off: Logger runs abnormally. 2. On 1s/Off 1s (Slow flash) : Logger runs normally. 3. On 100ms/Off 100ms (Fast flash) : Restore factory settings.



How to create End user account and authorize to them

# Solarman App

Overseas Technical Support Dep.  
13 May 2024

We're Committed To Become The World's Leading Provider Of Products In The Field Of New Energy & Energy-saving Of Industrial Control.

You have two method to create end user account and authorize them on solarman business app

### Authorization level



#### View plant only

This role can only view the plant which authorized by your business.



#### View +Edit plant

This role can view , edit the plant which authorized by your business, can control the devices (Depends on whether the manufacturer is authorized)



#### View +Edit +Delete plant

This role can view , edit the plant which authorized by your business, can control the devices (Depends on whether the manufacturer is authorized), can delete devices and subsystems in the plant.

Download SOLARMAN Business account app



**SOLARMAN  
Business  
account for  
installer,  
distributor  
and dealers**

Distributor and Dealer



Installer



## SOLARMAN Business account app

Once you create a plant on your business account, you can create and authorize end user by following steps

